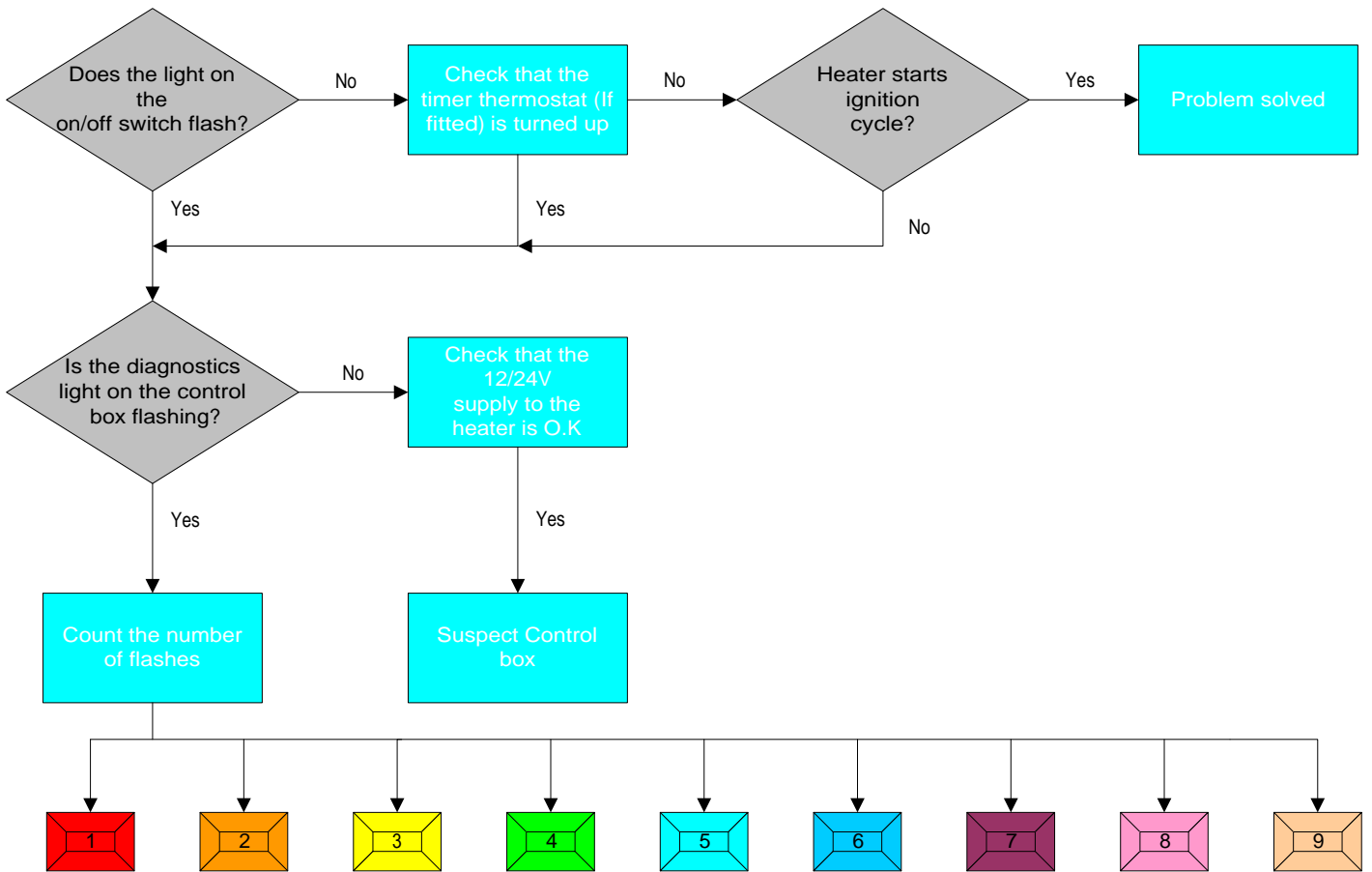
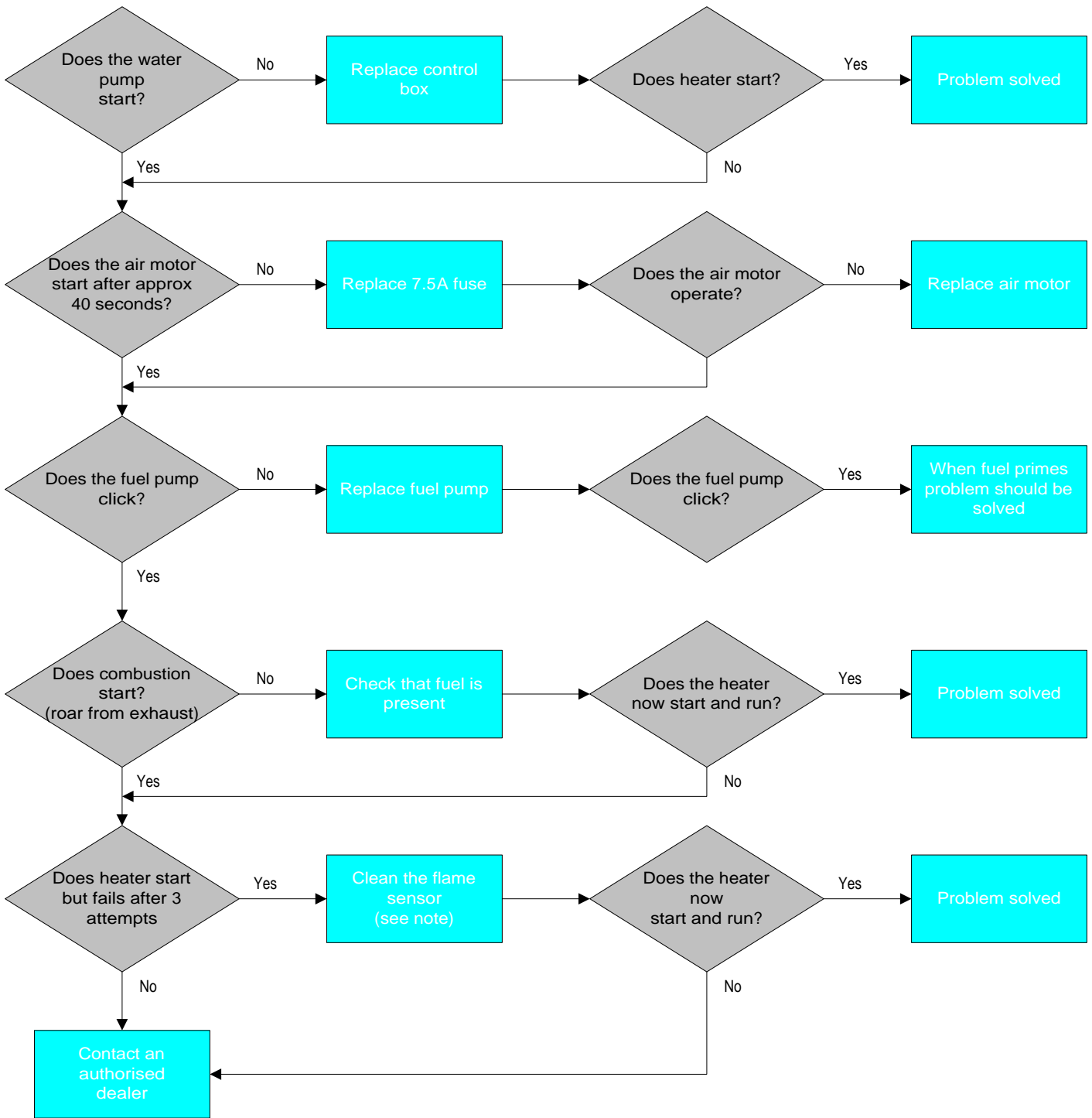


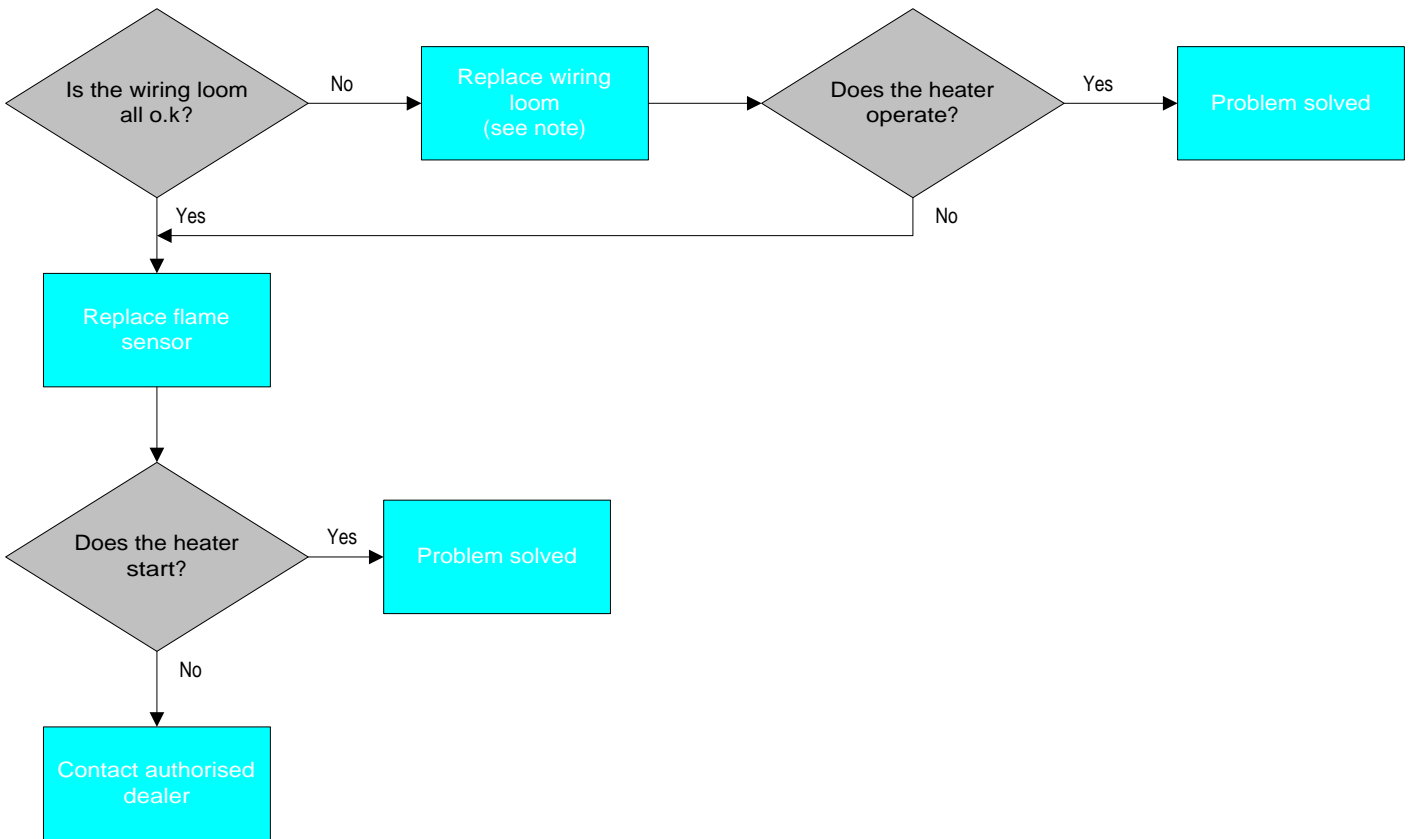
Heater does not function



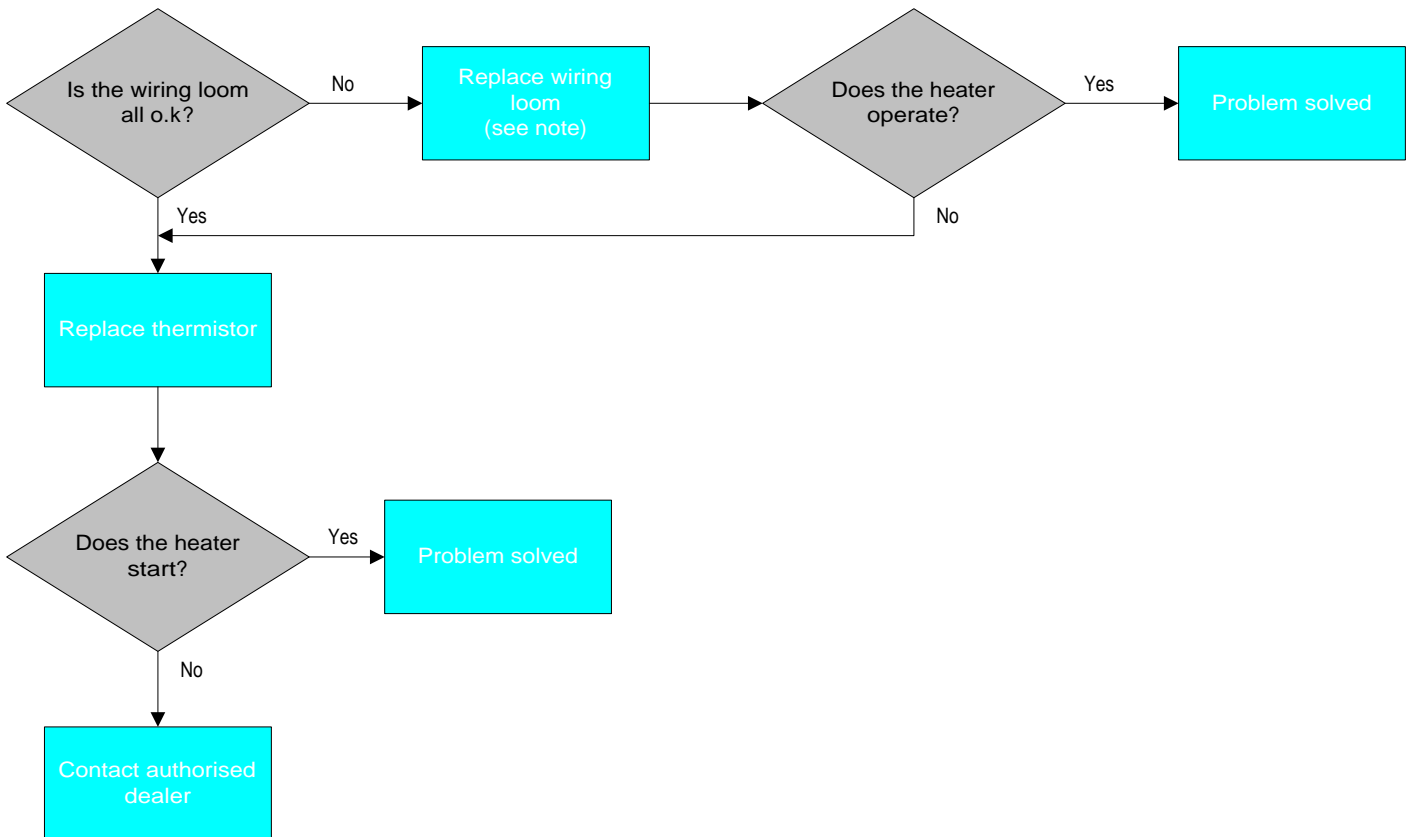
Control box: '1' flash - Indicating 'Ignition failure'



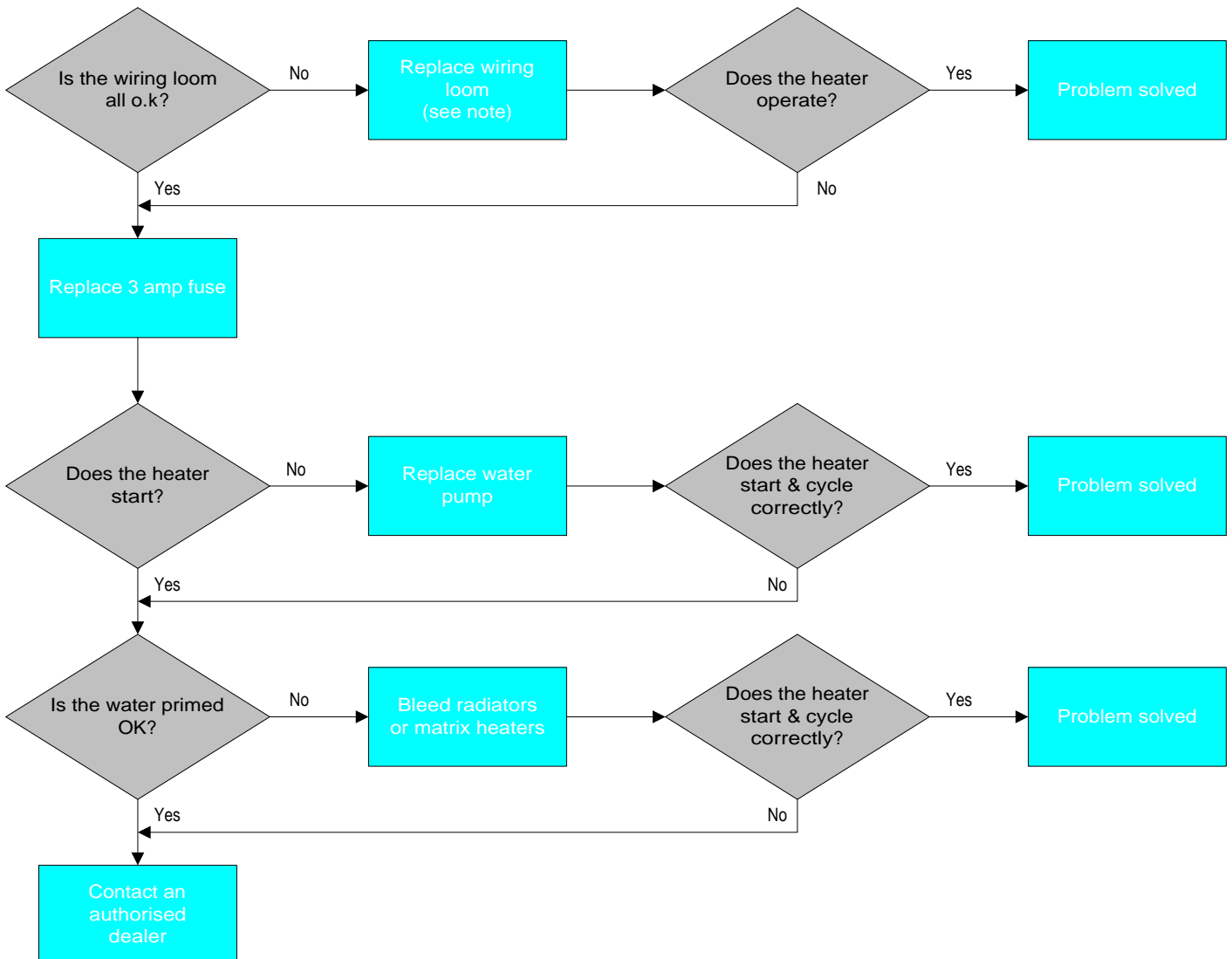
Control box: '2' flashes - Indicating 'flame sensor failure'



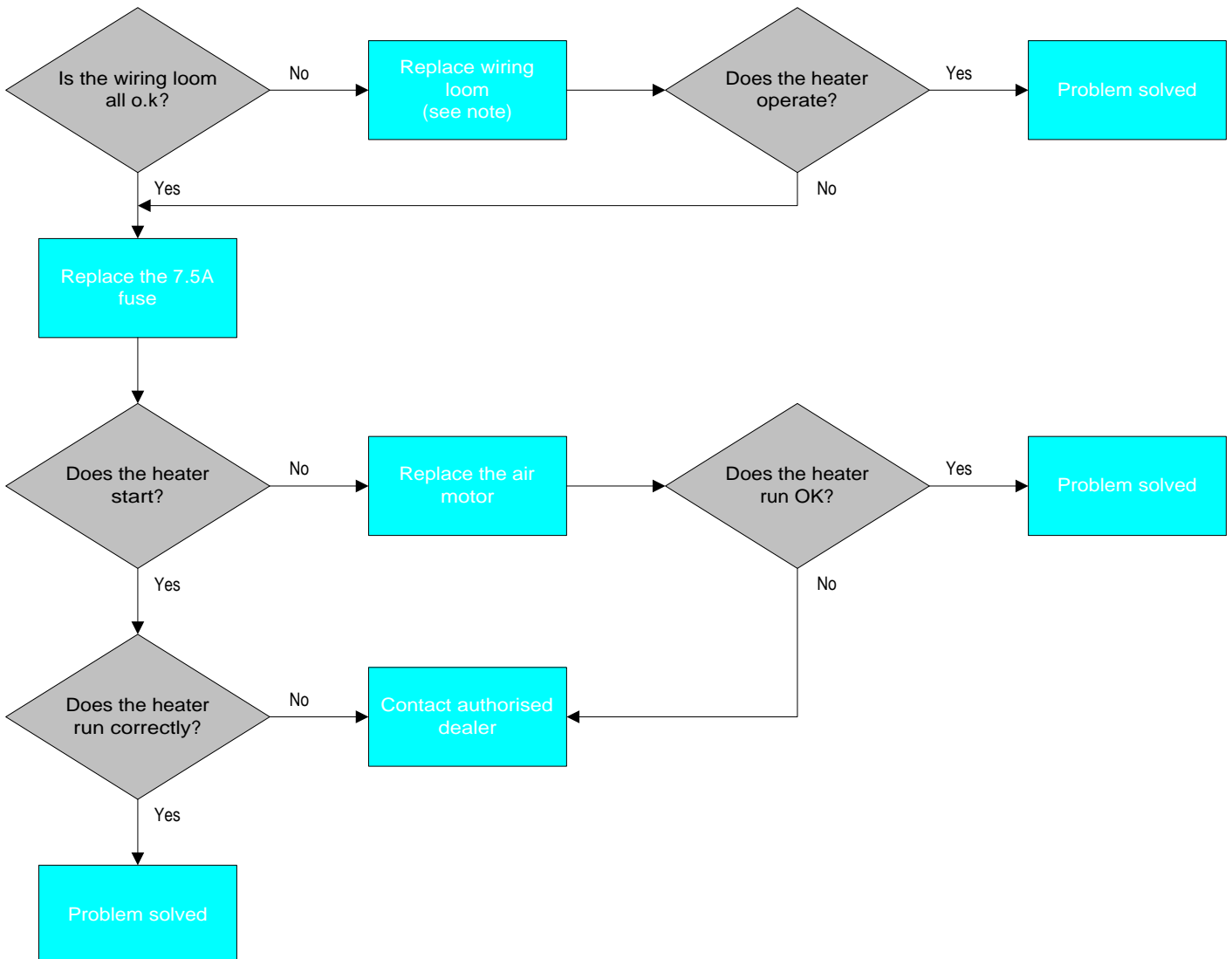
Control box: '3' flashes - Indicating 'thermistor failure'



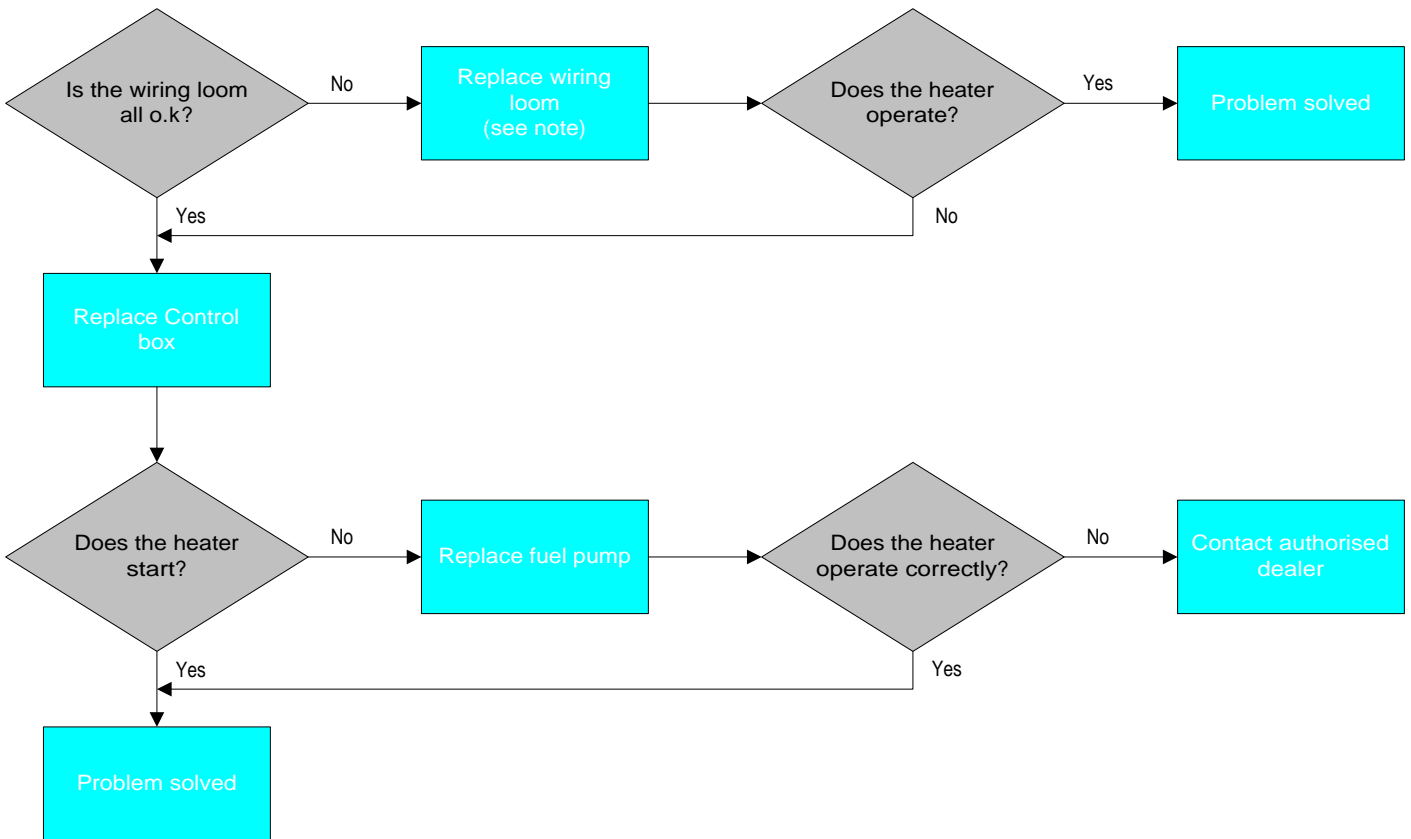
Control box: '4' flashes - Indicating 'Waterpump failure'



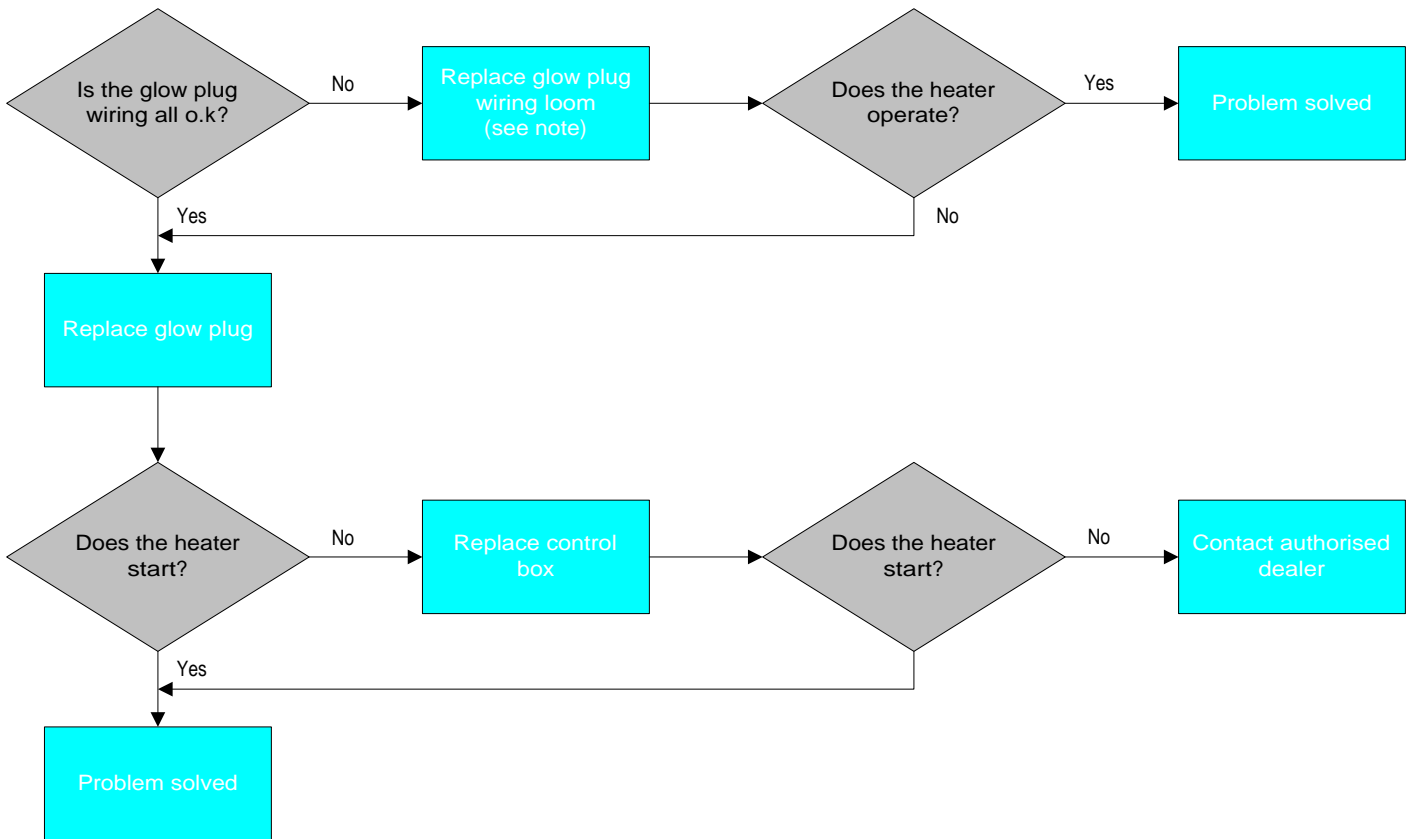
Control box: '5' flashes - Indicating 'Air motor failure'



Control box: '6' flashes - Indicating 'fuel pump failure'

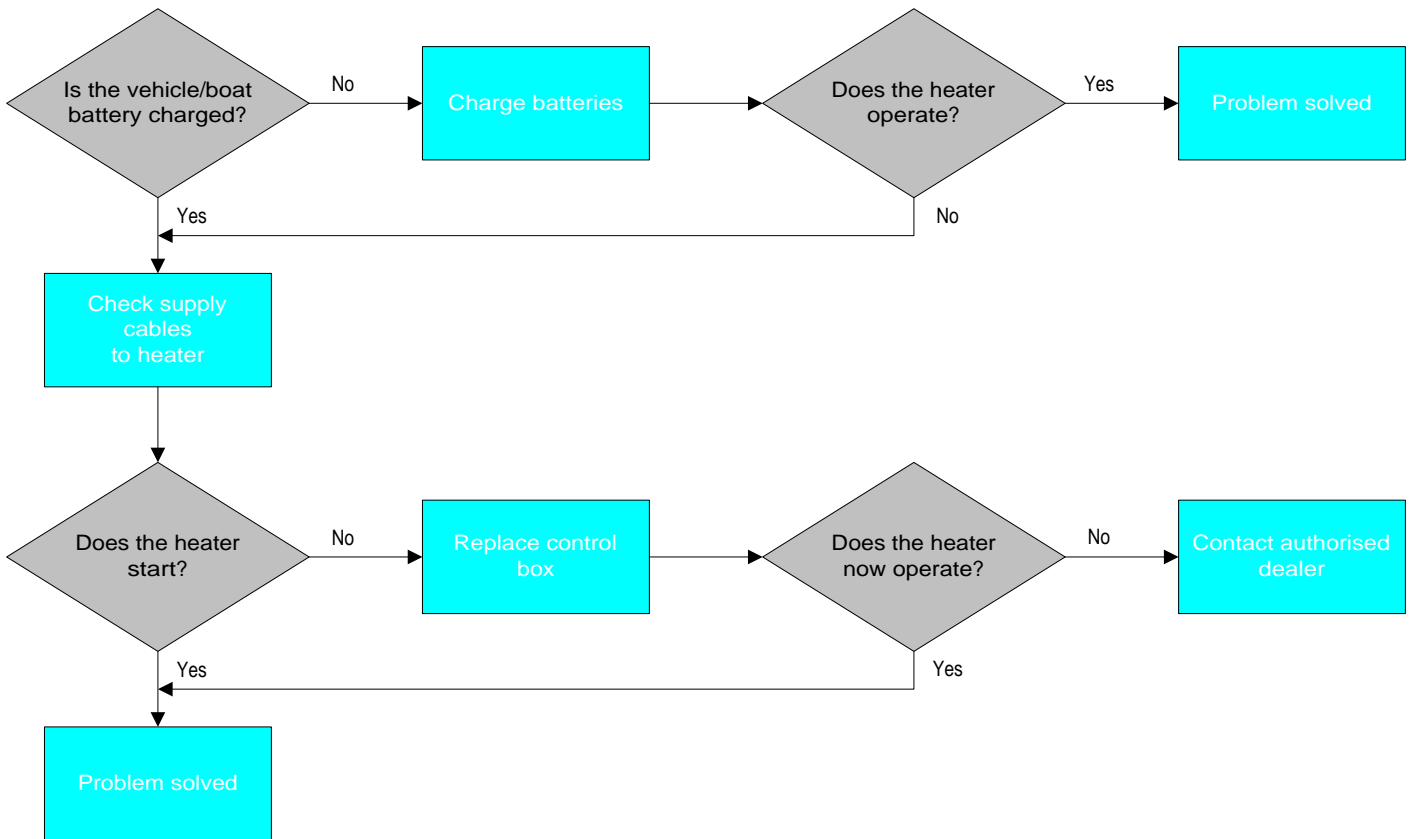


Control box: '7' flashes - Indicating 'glow plug failure'





Control box: '8' flashes - Indicating 'High or low voltage'



Control box: '9' flashes - Indicating 'Overheating failure'

